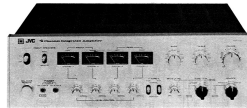




No. 2268

SERVICE MANUAL



MODEL 4VN-770

SOLID STATE 4-CHANNEL INTEGRATED AMPLIFIER

DIMENSIONS: Height 5 1/2", Width 16 1/2", Depth 12", Weight 21.4 lbs.

SPECIFICATIONS

POWER AMPLIFIER SECTION	OCCL Pure Complementary Circuit
Total Output Power (100%)	300W (20W + 20W + 20W + 20W) at 10 Load
R.M.S. Continuous Power	40W (10W + 10W + 10W + 10W) at 10 Load 100W (25W + 25W + 25W + 25W) at 16Ω Load 125W (For Channel at 16Ω Load in each channel) 20W (Per Channel at 16Ω Load in each 4-Channel) 4.7W (Per Head Output)
Total Harmonic Distortion	0.05% (at 100W)
Intermodulation Distortion	0.05% (at 100W)
Power Bandwidth	100-20,000 Hz
Frequency Response	20-20,000 Hz ±1dB
Dynamic Factor	20 at 100 Load
Load Impedance	16-16Ω (S.T.L. 16-16Ω)
PRE AMPLIFIER SECTION (2 Stage Double Coupled Equalizer)	
Total Harmonic Distortion	0.02% at 100mV Pre Amp Output
Frequency Response	20-20,000 Hz ±1dB
1/3% Noise	Phono 40dB Amp 70dB Tuner 70dB
Input Sensitivity	Phono 10mV Amp 100mV AUX 100mV
Recording Output	100mV (200) 20mV

VICTOR COMPANY OF JAPAN, LIMITED

ADJUSTMENT (for TAD-95J Power Amp. Section and TAC-17J Protector Section)

1. CENTER VOLTAGE TEST

Connect probe of DC V.T.V.M. to positive pole of Speaker Terminal. And connect ground or earth lead of V.T.V.M. to Speaker Earth Terminal or Chassis.
And turn to Power Switch On, V.T.V.M. should read 0 volt. If V.T.V.M. read as 0 volt adjust the VR (R45F, R45G, R45H, R45I) to V.T.V.M. read as 0 volt.

Note: Set the VR (R45F-R45I) at middle position before switch on.

2. IDLING CURRENT TEST

Connect DC V.T.V.M. to the check poles of Resistor (R46F, R46G, R46H, R46I) at both ends.
And V.T.V.M. should read 0 volt. If V.T.V.M. doesn't read 0 volt, adjust the VR (R46J, R46K, R46L, R46M) alternately for V.T.V.M. reads 0 volt. (Idling Current: 20 mA).

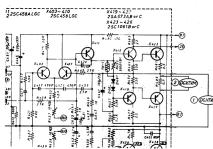


Fig. 3

3. PROTECTOR ADJUSTMENT

The protector circuit doesn't operate at 40 load, 1.5 volt (14 watt) output. (All channels are driven.)

Adjust the R32E to make the protector circuit by grounding the speaker terminals when the out put is 1.5 volt at 40 load.

And adjust R32E in order to activate the protector circuit by applying DC 0.25 volt to point A.

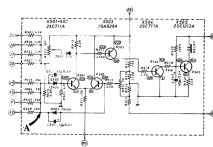


Fig. 4

PARTS ARRANGEMENT

- FRONT VIEW

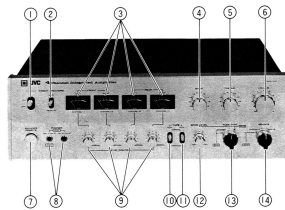


Fig. 1

Fig No.	Parts No.	Parts Name	Description
1	Q5L1125-001	Lever Switch	Power Switch
2	Q5L4125-003	∅	Front Speaker Selector
3	202276-007	∅	Level Meter
4	R46022-005	Knob	Main Tone Control
5	R46022-005	∅	Front Tone Control
6	R46022-006	∅	Volume
7	R46042-005	B. Remote Cup Adv'y	Balance Remote Cup
8	Q91063-001	Head Phone Jack	Head Phone
9	R46022-003	Knob	Level Control Volume
10	Q5L2122-001	Lever Switch	Tape Monitor
11	Q5L4122-004	∅	SFC Level Monitor
12	R46022-003	Knob	SFC Level Volume
13	R46022-004	∅	Function Selector
14	R46022-004	∅	Source Selector

- REAR VIEW

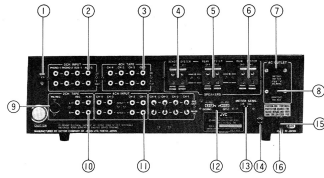


Fig. 5

Fig. No.	Part No.	Part Name	Description
1	ES0086	Push Terminal	GND Terminal
2	ES0043-80	Pin Jack Assy	2-Ch. Input Terminal
3	ES0043-80	"	4-Ch. Tap Terminal
4	ES0019-001	HP Push Terminal Assy	Rear Speaker Terminal
5	ES0019-001	"	Front Speaker Terminal
6	ES0019-001	"	Main Speaker Terminal
7	Q50123-004	AC Socket	Switched AC Input
8	Q50120-001	"	Unswitched AC Output
9	Q50092	8Pin Socket	8Pin Socket
10	ES0043-80	Pin Jack Assy	2-Ch. Tap, 4 Ch. Input
11	ES0043-120	"	4-Ch. Input, Pre-Out Main IN
12	Q50048-002	Slide Switch	HTL Switch
13	Q50026-002	"	Meter Sensitivity Switch
14	Q50111-001	Fuse Socket	Fuse Socket
15	ES0104-001	Cord Stopper	Power Cord Stopper
16	Q50066-11	AC Cord with Plug	Power Cord

TOP VIEW

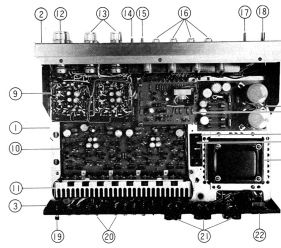


Fig. 5

Flt. No.	Parts No.	Parts Name	Flt. No.	Parts No.	Parts Name
1	E1332-002S	Chassis Base	12	E16009-009	Knob (Volume)
2	E2096-000	Front Panel Assy	13	E16009-005	Knob (Tone Control)
3	E21133-000	Rear Panel	14	42R225-005	Lower Switch (D.C. Tape Monitor)
4	E2088-000C	Power Transformer	15	42R225-004	Lower Switch (C.H. Tape Monitor)
5	E2088A	Voltage Select Socket	16	E16002-005	Knob (Level Control)
6	E2088B	Voltage Select Plug	17	42R433-004	Lever Switch (Front Speakers)
7	TAP-311	Power Supply Circuit Board Assy	18	42R433-002	Lever Switch (Power Switch)
8	TAC-177	Processor Circuit Board Assy	19	3100065	Push Terminal
9	TAC-180	Tone Control Circuit Board Assy	20	310004-00	Pin Jack Assy
10	TAD-952	Power Amp. Circuit Board Assy	21	E10410-001	HP Push Terminal Assy
11	E20705-000	Main Shaft	22	42R120-001	AC Socket

- BOTTOM VIEW

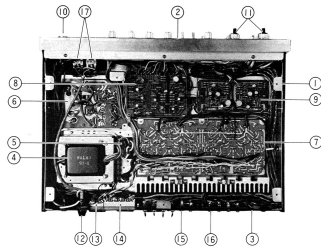


Fig. 7

Call No.	Part No.	Part Name	Call No.	Part No.	Part Name
1	E1312-0025	Chassis Base	10	E14942-000	R. Kettle Cap Assy
2	E20994-005	Front Panel Assy	11	E14073-004	Slide Knob
3	E21112-001	Rear Panel	12	Q20229-001	Front Switch Assy
4	E20308-30C	Power Transformer	13	Q254211-002	Slide Sw. (Motor Sens.)
5	E20894	Volume-Spotter Switcher	14	Q203439-002	Slide Sw. (DTE. Sw.)
6	TAP-111J	Power Supply C.B. Assy	15	E103043-139	Pin Lock Assy
7	TAD-05	SPECS C.B. Assy	16	E103043-001	"
8	TAC-102	Power Amp C.B. Assy	17	Q03941-001	Head Phone Jack
9	TAE-412	Equalizer C.B. Assy			

EXPLODED VIEW OF MECHANICAL PARTS
- COVER AND BOTTOM PLATE

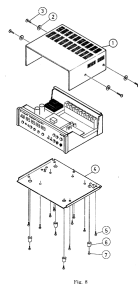


Fig. 4

Fig. No.	Part No.	Part's Name
1	E2123-011	Cover
2	Q2001-010	Washer
3	Q202400003	Bottom
4	E2001-010	Bottom Plate
5	Q20010000	Washer
6	Q2001-1	Fast
7	S00000000	Screw

- REAR PANEL

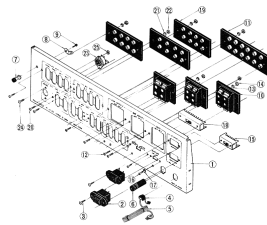


Fig. 9

Fig. No.	Part No.	Part Name	Description
1	E2112-001	Rear Panel	
2	Q8105-001	AC Socket	
3	S2121-001	2 Screws	
4	E1076-001	Cord Strip	
5	Q8106-14	MC Cord with Plug	
6	Q8103-001	Fuse Socket Assy	
7	E10680	Fuse Terminal	
8	E1279-2	Earth Lug	
9	L12121-001	Weld Screws	
10	E10110-001	4P Plug Terminal Assy	
11	E10111-001	Pin Jack Assy	
12	S2121-001	Screw	
13	W13020N	Lock Washer	
14	N20100N	Washer	
15	Q81024-002	Slide Switch	AC 1P for Meter Sens.
16	S2121-001	Screw	
17	W13020N	Lock Washer	
18	Q81024-001	Slide Switch	AC 1P for HTL Switch
19	E10103-001	Pin Jack Assy	
20	S2121-001	Screw	
21	W13020N	Lock Washer	
22	N20100N	Washer	
23	Q81047	DN Socket	
24	S2121-001	Screw	
25	N20100N	Washer	

- FRONT PANEL

ITD No.	Part No.	Part Name	Description
1	E2094-000	Front Panel Assy	
3	S2S200C	Screw	
4	E2005-000	Volume Knob	
5	E2005-000	Knob	
6	E2005-000	"	
7	E2005-000	"	

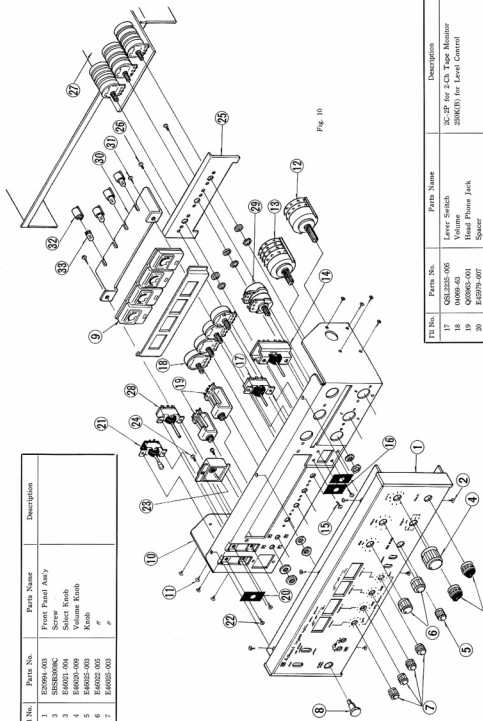


Fig. 10

ITD No.	Part No.	Part Name	Description
8	E2094-000	Rotary Switch	
9	E2005-000	Head Phone Jack	
10	E2005-000	Volume Knob	
11	S2S200C	Screw	
12	S2S200C	Rotary Switch	
13	S2S200C	Screw	
14	S2S200C	Screw	
15	S2S200C	Screw	
16	S2S200C	Screw	
17	S2S200C	Screw	
18	S2S200C	Screw	
19	S2S200C	Screw	
20	S2S200C	Screw	
21	S2S200C	Screw	
22	S2S200C	Screw	
23	S2S200C	Screw	
24	S2S200C	Screw	
25	S2S200C	Screw	
26	S2S200C	Screw	
27	S2S200C	Screw	
28	S2S200C	Screw	
29	S2S200C	Screw	
30	S2S200C	Screw	
31	S2S200C	Screw	
32	S2S200C	Screw	
33	S2S200C	Screw	
34	S2S200C	Screw	
35	S2S200C	Screw	

ITD No.	Part No.	Part Name	Description
15	E2094-000	Front Panel Assy	
16	M0005-000	Volume Knob	
19	M0005-000	Head Phone Jack	
21	S2S200C	Rotary Switch	
22	S2S200C	Screw	
23	S2S200C	Screw	
24	S2S200C	Screw	
25	S2S200C	Screw	
26	S2S200C	Screw	
27	S2S200C	Screw	
28	S2S200C	Screw	
29	S2S200C	Screw	
30	S2S200C	Screw	
31	S2S200C	Screw	
32	S2S200C	Screw	
33	S2S200C	Screw	
34	S2S200C	Screw	
35	S2S200C	Screw	

CIRCUIT BOARD AND PARTS
 ■ EQUALIZER CIRCUIT BOARD ASSY

·TAE-44J PARTS SIDE

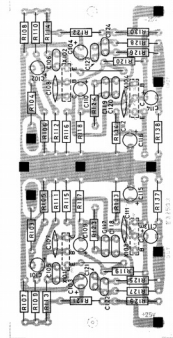
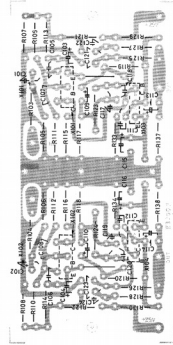


Fig. 11

Part No.	Part Name	Description	Part No.	Part Name	Description
E5250-003	Circuit Board	X101, X102	Q0204-802	M. Cap	C101, C104
C8248	S. Transistor	C103, C104	Q0800-11C	Carbon Resistor	R101, R104
Q0110-100	E. Cap	C105, C106	"	"	R105, R106
"	"	C107, C108	"	"	R107, R110
"	"	C109, C110	"	"	R111, R114
"	"	C111, C112	"	"	R115, R118
"	"	C113, C114	"	"	R119, R122
"	"	C115, C116	"	"	R123, R126
"	"	C117, C118	"	"	R127, R130
R001P-2.3	T. Cap	C119, C120	"	"	R131, R134
R001P-3.3	C. Cap	C121, C122	"	"	R135, R138
Q0801-470	M. Cap	C123, C124	"	"	R139, R142
Q0801-56	"	C125, C126	"	"	R143, R146
Q0801-100	"	C127, C128	"	"	R147, R150
Q0801-222	"	C129, C130	"	"	R151, R154
		C131, C132	"	"	R155, R158
		C133, C134	"	"	R159, R162

Fig. 12

·TAE-44J PATTERN SIDE



■ TONE CONTROL CIRCUIT BOARD ASSEMBLY
- TAC-135U PARTS SIDE

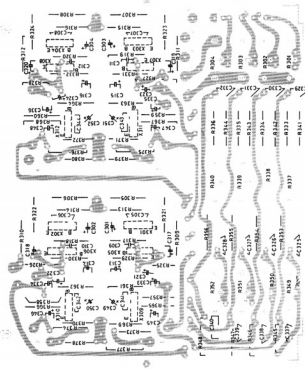


Fig. 15

Part No.	Part Name	Description
R5204-000	Control Resistor	X301 ~ X306, X346 ~ X348
R5205-000	SR Transformer	C345 ~ C348
Q0110-3	E. Cap	C333 ~ C336
" 10	"	C337 ~ C338
Q0108-30	"	C339 ~ C342
Q0112-1	"	C343 ~ C344
R0117-3,3	T. Cap	C301 ~ C304
R0118-3,3	P. Cap	C305 ~ C308, C327 ~ C340
Q0151-475	Cap	C329 ~ C332
Q0150-1K	C. Cap	C309 ~ C312
" 10K	Carbon Resistor	R305 ~ R308, R399 ~ R375, R345 ~ R348

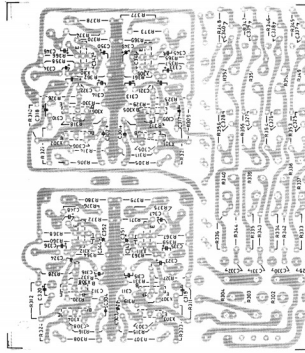


Fig. 16

Part No.	Part Name	Description
Q0100-1.5K	Carbon Resistor	R350 ~ R353, R355 ~ R361
" 1.5K	"	R354 ~ R357
" 20K	"	R380 ~ R382
" 33K	"	R383 ~ R384
" 500K	"	R387 ~ R389
" 5.4K	"	R390 ~ R392
" 400K	"	R377 ~ R380
R0141-001	Resistor	R381 ~ R384
" 10K	Carbon Resistor	R377 ~ R380, R349 ~ R352

■ POWER SUPPLY CIRCUIT BOARD ASS'Y

· TAP-14J PARTS SIDE

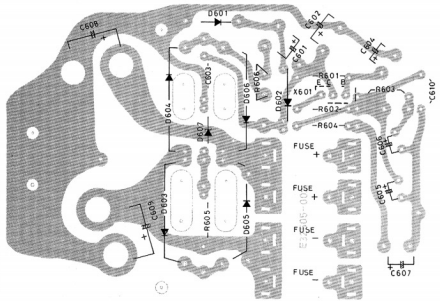


Fig. 19

· TAP-14J PATTERN SIDE

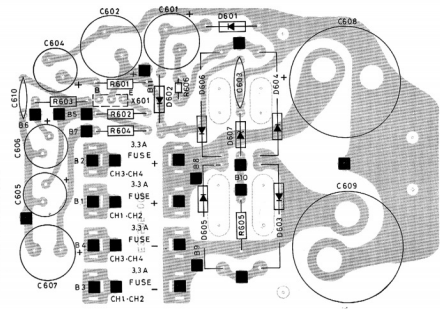


Fig. 20

Part No.	Part Name	Description	Part No.	Part Name	Description
R3349-001	Circuit Board		QF73209-021	K. Cap	
190-3P	SI. Diode (FUJ)	R000 ~ R006	Q0138-070	"	C006, C009
190-3P	SI. Diode (FUJ)	R007, R008	Q0138-070	"	C007, C007
190-3P	Zener Diode (FUJ)	R009, R002	Q0138-000	"	C008, C008
200-3P	SI. Transistor	R001, R002	"	"	C009, C009
200-3P	Comp. Resistor	R003	"	"	C002
0809-1.5K	"	R004	01E12.5 3	"	Capacitor for Processor
"	"	R005	RES24-001	"	for Processor
"	"	R006	RES24-001	Constant Chip	for C006, C009
"	"	R007	NS2200025	Wavy Screw	"
"	"	R008	NS2200025	Wavy Screw	"
"	"	R009		Nil	
"	"	R010		Nil	

POWER AMP CIRCUIT BOARD ASSY
 TAD 9EJ PARTS SIDE

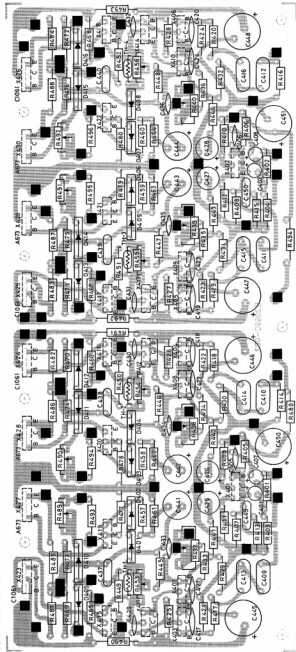


Fig. 21

Part No.	Part Name	Description	Part No.	Part Name	Description
2SC6452G	S. Transistor	X101, X102	00010-100	Diode	D100 ~ D104
00013-5	E. Cap	C101, C102	00013-200	E. Cap	C101 ~ C144
00013-10	C. Cap	C201, C202	00013-300	C. Cap	C105 ~ C148
00013-27	T. Res.	C301, C302	00013-15	C. Cap	C151 ~ C152
00013-47D	T. Res.	C401, C402	00013-27	T. Res.	R101 ~ R102
00013-1K	T. Res.	M101, M102	00013-27	T. Res.	R103 ~ R104
00013-1K	T. Res.	M103, M104	00013-27	T. Res.	R105 ~ R106
00013-1K	T. Res.	M105, M106	00013-27	T. Res.	R107 ~ R108
00013-1K	T. Res.	M107, M108	00013-27	T. Res.	R109 ~ R110
00013-1K	T. Res.	M109, M110	00013-27	T. Res.	R111 ~ R112
00013-1K	T. Res.	M111, M112	00013-27	T. Res.	R113 ~ R114
00013-1K	T. Res.	M113, M114	00013-27	T. Res.	R115 ~ R116
00013-1K	T. Res.	M115, M116	00013-27	T. Res.	R117 ~ R118
00013-1K	T. Res.	M117, M118	00013-27	T. Res.	R119 ~ R120
00013-1K	T. Res.	M119, M120	00013-27	T. Res.	R121 ~ R122
00013-1K	T. Res.	M121, M122	00013-27	T. Res.	R123 ~ R124
00013-1K	T. Res.	M123, M124	00013-27	T. Res.	R125 ~ R126
00013-1K	T. Res.	M125, M126	00013-27	T. Res.	R127 ~ R128
00013-1K	T. Res.	M127, M128	00013-27	T. Res.	R129 ~ R130
00013-1K	T. Res.	M129, M130	00013-27	T. Res.	R131 ~ R132
00013-1K	T. Res.	M131, M132	00013-27	T. Res.	R133 ~ R134
00013-1K	T. Res.	M133, M134	00013-27	T. Res.	R135 ~ R136
00013-1K	T. Res.	M135, M136	00013-27	T. Res.	R137 ~ R138
00013-1K	T. Res.	M137, M138	00013-27	T. Res.	R139 ~ R140
00013-1K	T. Res.	M139, M140	00013-27	T. Res.	R141 ~ R142
00013-1K	T. Res.	M141, M142	00013-27	T. Res.	R143 ~ R144
00013-1K	T. Res.	M143, M144	00013-27	T. Res.	R145 ~ R146
00013-1K	T. Res.	M145, M146	00013-27	T. Res.	R147 ~ R148
00013-1K	T. Res.	M147, M148	00013-27	T. Res.	R149 ~ R150
00013-1K	T. Res.	M149, M150	00013-27	T. Res.	R151 ~ R152
00013-1K	T. Res.	M151, M152	00013-27	T. Res.	R153 ~ R154
00013-1K	T. Res.	M153, M154	00013-27	T. Res.	R155 ~ R156
00013-1K	T. Res.	M155, M156	00013-27	T. Res.	R157 ~ R158
00013-1K	T. Res.	M157, M158	00013-27	T. Res.	R159 ~ R160
00013-1K	T. Res.	M159, M160	00013-27	T. Res.	R161 ~ R162
00013-1K	T. Res.	M161, M162	00013-27	T. Res.	R163 ~ R164
00013-1K	T. Res.	M163, M164	00013-27	T. Res.	R165 ~ R166
00013-1K	T. Res.	M165, M166	00013-27	T. Res.	R167 ~ R168
00013-1K	T. Res.	M167, M168	00013-27	T. Res.	R169 ~ R170
00013-1K	T. Res.	M169, M170	00013-27	T. Res.	R171 ~ R172
00013-1K	T. Res.	M171, M172	00013-27	T. Res.	R173 ~ R174
00013-1K	T. Res.	M173, M174	00013-27	T. Res.	R175 ~ R176
00013-1K	T. Res.	M175, M176	00013-27	T. Res.	R177 ~ R178
00013-1K	T. Res.	M177, M178	00013-27	T. Res.	R179 ~ R180
00013-1K	T. Res.	M179, M180	00013-27	T. Res.	R181 ~ R182
00013-1K	T. Res.	M181, M182	00013-27	T. Res.	R183 ~ R184
00013-1K	T. Res.	M183, M184	00013-27	T. Res.	R185 ~ R186
00013-1K	T. Res.	M185, M186	00013-27	T. Res.	R187 ~ R188
00013-1K	T. Res.	M187, M188	00013-27	T. Res.	R189 ~ R190
00013-1K	T. Res.	M189, M190	00013-27	T. Res.	R191 ~ R192
00013-1K	T. Res.	M191, M192	00013-27	T. Res.	R193 ~ R194
00013-1K	T. Res.	M193, M194	00013-27	T. Res.	R195 ~ R196
00013-1K	T. Res.	M195, M196	00013-27	T. Res.	R197 ~ R198
00013-1K	T. Res.	M197, M198	00013-27	T. Res.	R199 ~ R200
00013-1K	T. Res.	M199, M200	00013-27	T. Res.	R201 ~ R202
00013-1K	T. Res.	M201, M202	00013-27	T. Res.	R203 ~ R204
00013-1K	T. Res.	M203, M204	00013-27	T. Res.	R205 ~ R206
00013-1K	T. Res.	M205, M206	00013-27	T. Res.	R207 ~ R208
00013-1K	T. Res.	M207, M208	00013-27	T. Res.	R209 ~ R210
00013-1K	T. Res.	M209, M210	00013-27	T. Res.	R211 ~ R212
00013-1K	T. Res.	M211, M212	00013-27	T. Res.	R213 ~ R214
00013-1K	T. Res.	M213, M214	00013-27	T. Res.	R215 ~ R216
00013-1K	T. Res.	M215, M216	00013-27	T. Res.	R217 ~ R218
00013-1K	T. Res.	M217, M218	00013-27	T. Res.	R219 ~ R220
00013-1K	T. Res.	M219, M220	00013-27	T. Res.	R221 ~ R222
00013-1K	T. Res.	M221, M222	00013-27	T. Res.	R223 ~ R224
00013-1K	T. Res.	M223, M224	00013-27	T. Res.	R225 ~ R226
00013-1K	T. Res.	M225, M226	00013-27	T. Res.	R227 ~ R228
00013-1K	T. Res.	M227, M228	00013-27	T. Res.	R229 ~ R230
00013-1K	T. Res.	M229, M230	00013-27	T. Res.	R231 ~ R232
00013-1K	T. Res.	M231, M232	00013-27	T. Res.	R233 ~ R234
00013-1K	T. Res.	M233, M234	00013-27	T. Res.	R235 ~ R236
00013-1K	T. Res.	M235, M236	00013-27	T. Res.	R237 ~ R238
00013-1K	T. Res.	M237, M238	00013-27	T. Res.	R239 ~ R240
00013-1K	T. Res.	M239, M240	00013-27	T. Res.	R241 ~ R242
00013-1K	T. Res.	M241, M242	00013-27	T. Res.	R243 ~ R244
00013-1K	T. Res.	M243, M244	00013-27	T. Res.	R245 ~ R246
00013-1K	T. Res.	M245, M246	00013-27	T. Res.	R247 ~ R248
00013-1K	T. Res.	M247, M248	00013-27	T. Res.	R249 ~ R250
00013-1K	T. Res.	M249, M250	00013-27	T. Res.	R251 ~ R252
00013-1K	T. Res.	M251, M252	00013-27	T. Res.	R253 ~ R254
00013-1K	T. Res.	M253, M254	00013-27	T. Res.	R255 ~ R256
00013-1K	T. Res.	M255, M256	00013-27	T. Res.	R257 ~ R258
00013-1K	T. Res.	M257, M258	00013-27	T. Res.	R259 ~ R260
00013-1K	T. Res.	M259, M260	00013-27	T. Res.	R261 ~ R262
00013-1K	T. Res.	M261, M262	00013-27	T. Res.	R263 ~ R264
00013-1K	T. Res.	M263, M264	00013-27	T. Res.	R265 ~ R266
00013-1K	T. Res.	M265, M266	00013-27	T. Res.	R267 ~ R268
00013-1K	T. Res.	M267, M268	00013-27	T. Res.	R269 ~ R270
00013-1K	T. Res.	M269, M270	00013-27	T. Res.	R271 ~ R272
00013-1K	T. Res.	M271, M272	00013-27	T. Res.	R273 ~ R274
00013-1K	T. Res.	M273, M274	00013-27	T. Res.	R275 ~ R276
00013-1K	T. Res.	M275, M276	00013-27	T. Res.	R277 ~ R278
00013-1K	T. Res.	M277, M278	00013-27	T. Res.	R279 ~ R280
00013-1K	T. Res.	M279, M280	00013-27	T. Res.	R281 ~ R282
00013-1K	T. Res.	M281, M282	00013-27	T. Res.	R283 ~ R284
00013-1K	T. Res.	M283, M284	00013-27	T. Res.	R285 ~ R286
00013-1K	T. Res.	M285, M286	00013-27	T. Res.	R287 ~ R288
00013-1K	T. Res.	M287, M288	00013-27	T. Res.	R289 ~ R290
00013-1K	T. Res.	M289, M290	00013-27	T. Res.	R291 ~ R292
00013-1K	T. Res.	M291, M292	00013-27	T. Res.	R293 ~ R294
00013-1K	T. Res.	M293, M294	00013-27	T. Res.	R295 ~ R296
00013-1K	T. Res.	M295, M296	00013-27	T. Res.	R297 ~ R298
00013-1K	T. Res.	M297, M298	00013-27	T. Res.	R299 ~ R300
00013-1K	T. Res.	M299, M300	00013-27	T. Res.	R301 ~ R302
00013-1K	T. Res.	M301, M302	00013-27	T. Res.	R303 ~ R304
00013-1K	T. Res.	M303, M304	00013-27	T. Res.	R305 ~ R306
00013-1K	T. Res.	M305, M306	00013-27	T. Res.	R307 ~ R308
00013-1K	T. Res.	M307, M308	00013-27	T. Res.	R309 ~ R310
00013-1K	T. Res.	M309, M310	00013-27	T. Res.	R311 ~ R312
00013-1K	T. Res.	M311, M312	00013-27	T. Res.	R313 ~ R314
00013-1K	T. Res.	M313, M314	00013-27	T. Res.	R315 ~ R316
00013-1K	T. Res.	M315, M316	00013-27	T. Res.	R317 ~ R318
00013-1K	T. Res.	M317, M318	00013-27	T. Res.	R319 ~ R320
00013-1K	T. Res.	M319, M320	00013-27	T. Res.	R321 ~ R322
00013-1K	T. Res.	M321, M322	00013-27	T. Res.	R323 ~ R324
00013-1K	T. Res.	M323, M324	00013-27	T. Res.	R325 ~ R326
00013-1K	T. Res.	M325, M326	00013-27	T. Res.	R327 ~ R328
00013-1K	T. Res.	M327, M328	00013-27	T. Res.	R329 ~ R330
00013-1K	T. Res.	M329, M330	00013-27	T. Res.	R331 ~ R332
00013-1K	T. Res.	M331, M332	00013-27	T. Res.	R333 ~ R334
00013-1K	T. Res.	M333, M334	00013-27	T. Res.	R335 ~ R336
00013-1K	T. Res.	M335, M336	00013-27	T. Res.	R337 ~ R338
00013-1K	T. Res.	M337, M338	00013-27	T. Res.	R339 ~ R340
00013-1K	T. Res.	M339, M340	00013-27	T. Res.	R341 ~ R342
00013-1K	T. Res.	M341, M342	00013-27	T. Res.	R343 ~ R344
00013-1K	T. Res.	M343, M344	00013-27	T. Res.	R345 ~ R346
00013-1K	T. Res.	M345, M346	00013-27	T. Res.	R347 ~ R348
00013-1K	T. Res.	M347, M348	00013-27	T. Res.	R349 ~ R350
00013-1K	T. Res.	M349, M350	00013-27	T. Res.	R351 ~ R352
00013-1K	T. Res.	M351, M352	00013-27	T. Res.	R353 ~ R354
00013-1K	T. Res.	M353, M354	00013-27	T. Res.	R355 ~ R356
00013-1K	T. Res.	M355, M356	00013-27	T. Res.	R357 ~ R358
00013-1K	T. Res.	M357, M358	00013-27	T. Res.	R359 ~ R360
00013-1K	T. Res.	M359, M360	00013-27	T. Res.	R361 ~ R362
00013-1K	T. Res.	M361, M362	00013-27	T. Res.	R363 ~ R364
00013-1K	T. Res.	M363, M364	00013-27	T. Res.	R365 ~ R366
00013-1K	T. Res.	M365, M366	00013-27	T. Res.	R367 ~ R368
00013-1K	T. Res.	M367, M368	00013-27	T. Res.	R369 ~ R370
00013-1K	T. Res.	M369, M370	00013-27	T. Res.	R371 ~ R372
00013-1K	T. Res.	M371, M372	00013-27	T. Res.	R373 ~ R374
00013-1K	T. Res.	M373, M374	00013-27	T. Res.	R375 ~ R376
00013-1K	T. Res.	M375, M376	00013-27	T. Res.	R377 ~ R378
00013-1K	T. Res.	M377, M378	00013-27	T. Res.	R379 ~ R380
00013-1K	T. Res.	M379, M380	00013-27	T. Res.	R381 ~ R382
00013-1K	T. Res.	M381, M382	00013-27	T. Res.	R383 ~ R384
00013-1K	T. Res.	M383, M384	00013-27	T. Res.	R385 ~ R386
00013-1K	T. Res.	M385, M386	00013-27	T. Res.	R387 ~ R388
00013-1K	T. Res.	M387, M388	00013-27	T. Res.	R389 ~ R390
00013-1K	T. Res.	M389, M390	00013-27	T. Res.	R391 ~ R392
00013-1K	T. Res.	M391, M392	00013-27	T. Res.	R393 ~ R394
00013-1K	T. Res.	M393, M394	00013-27	T. Res.	R395 ~ R396
00013-1K	T. Res.	M395, M396	00013-27	T. Res.	R397 ~ R398
0					

TAD-96J PATTERN SIDE

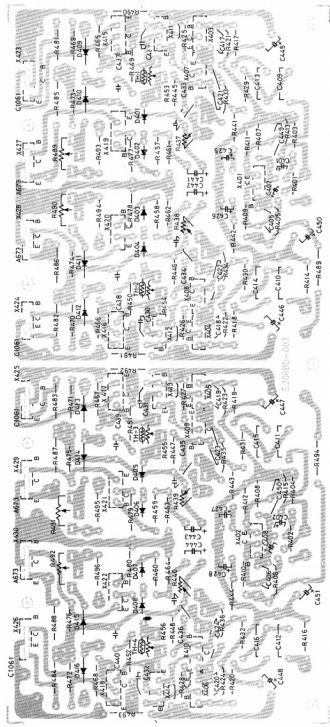


Fig. 16

• SOURCE SELECT SWITCH

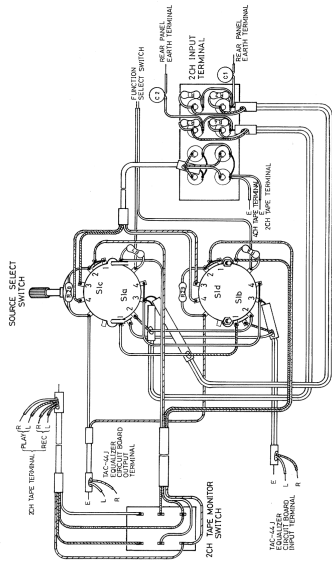


FIG. 24

- SPEAKER TERMINAL
- BTL SW.
- METER SW.
- SPEAKER SW.
- HEAD PHONE JACK

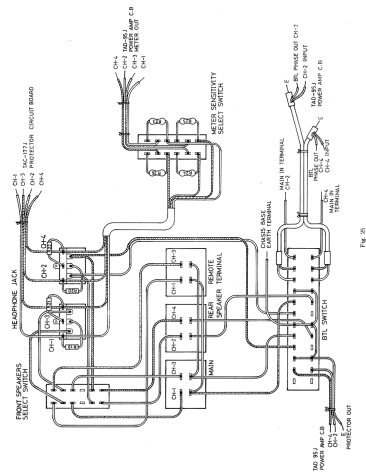
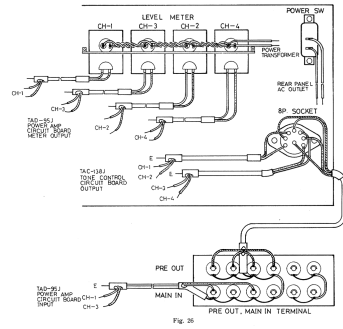
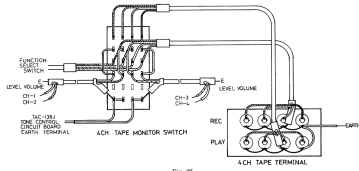


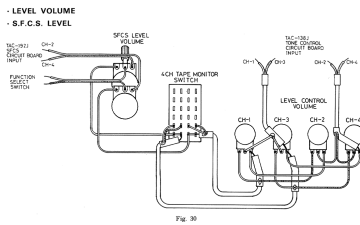
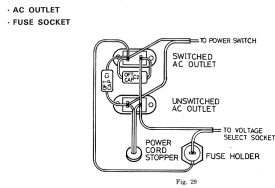
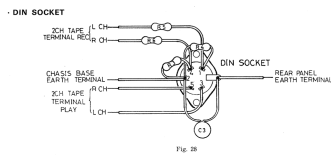
Fig. 20

- LEVEL METER
- POWER SW
- 8P SOCKET



- 4.CH. TAPE MONITOR SW.





TRANSISTORS

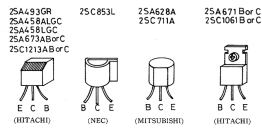


Fig. 31

POWER TRANSFORMER VOLTAGE

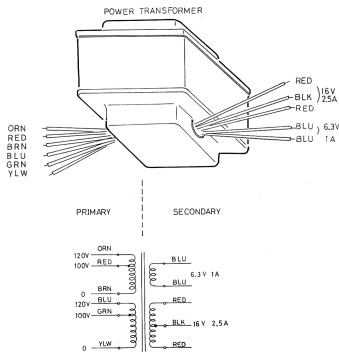


Fig. 32

ACCESSORIES

For 21C		For 317XG0		Parts Name
Parts No.	Parts No.	Parts No.	Parts No.	
E64207-002	E64207-002			Envelope
E64208-002	E64208-002			Service Station List
E64209-002				Post Tag
E64208-001	E64208-001			Envelope
041411-2				Post
		04112-2-3		"
		04112-3-2		"
E63080-327A	E63080-325A			Instruction Book
E61105-001	E61105-001			Polishing Cloth
E64213-002	E63080-002			Warranty Card
E63039-333A	E63039-332A			Schematic Diagram

FINAL PACKING ASS'Y

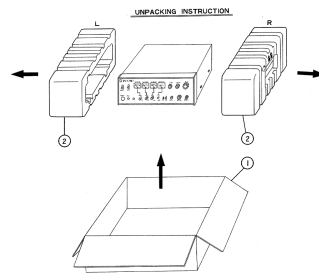


Fig. 33

Fig. No.	Parts No.	Parts Name
1	4YN-770-FK	Carton Case
2	4YN-770-H2	Packing Materials

The List of JVC Service Manual

No.	Model	No.	Model	No.	Model	No.	Model
2801	4TR-JU	2091	ABC-30A, 30B	2131	NS9086L, NS9087	21116	STC-302 (R-1)
2802	N-207	2092	4TR-10	2132	SEP-472E	2112	STC-31
2803	8BE-103E	2093	212N, 2170	2133	SEP-440E	2113	STC-310ELV
2804	SONY 4TR-6000	2094	317-TLA	2134	ASC-10L	2114	STP-800C
2805	ABC-85A	2095	31F-2AC	2135	ASC-10L, 20A	2115	STP-800C
2806	TRD-13F	2096	31F-07F	2136	ASC-10L, 20A	2116	STP-800C
2807	SEP-307E	2097	N-800 (R-2)	2137	ASC-10L, 20A	2117	STP-800C
2808	SEP-402E	2098	N-143	2138	ASC-10L, 20A	2118	STP-800C
2809	ECA-101E	2099	4TR-45	2139	ASC-10L, 20A	2119	STP-800C
2809	STC-19	2100	MSL-33E	2140	SEP-01	2120	STC-302 (R-1)

No.	Model	No.	Model	No.	Model	No.	Model
2131	STP-800A	2141	233A, 2340	2151a	2008 (R-2)	2161	4331U
2132	ABC-4L 42	2142	L-311D	2152	222, 402A	2162	MFA-105
2133	TRF-600C	2143	4005, 4105, 4104	2153	MSL-3005	2163	MCA-100E
2134	4TR-000CX (a)	2144	ARC-7E	2154	4338	2164	SEA-100E/100A
2135	5000	2145	2011, 2011-1000E	2155	N-484, N-484U	2165	2005
2136	STP-030E/320	2146	2012, 2012-1000E	2156	MSL-501E	2166	4338U
2137	N-420	2147	MSL-500E	2157	N-202E, 305	2167	MCA-100E/100A
2138	4TR-011D, L511A	2148	2310	2158	4111	2168	5020/5030U
2139	SEP-040E/200	2149	MSL-1205	2159	4111, 4321	2169	2005P
2140	500	2150	2005	2160	510	2170	SD20

No.	Model	No.	Model	No.	Model	No.	Model
2161	4005	2181	MCM-1057/1111	2201	MSL-001E	2211	RLA-500E
2162	ABC-30	2182	330	2202	MSL-2055	2212	MCT-VTE
2163	MCT-105E/108	2183	MSL-3015	2203	443	2213	500
2164	SCR-200	2184	MCA-VTE	2204	610	2214	N200/Rev No. 2
2165	4338	2185	580, 600	2205	N-202VE	2215	520U
2166	N-400 Series	2186	200, 020, 05	2206	500	2216	444-544U
2167	333, 333S	2187	200	2207	540	2217	501
2168	MSL-101L	2188	201	2208	MTR-10MF	2218	INCT-VHS
2169	MSA-404E	2189	531, 531K	2209	5030/5030C	2219	100
2170	N-202P/N1	2190	531, 531K	2210	5031, 5031C	2220	100

No.	Model	No.	Model	No.	Model	No.	Model
2211	CL4-1E	2241	434U (R-2)	2281	VR-501	2301	VS-200T
2212	SEP-472E	2242	M5-401, 411U	2282	VR-101	2302	VR-511
2213	N-400P/N1 #1	2243	MF-410	2283	VS-0208	2303	405-10
2214	SEA-VTE	2244	M5-401	2284	VS-0212	2304	501
2215	MSL-001E	2245	QHL-PY7E	2285	VS-0212	2305	VT-700
2216	VS-001	2246	MF-400	2286	VS-0247	2306	405-400
2217	VS-500E	2247	4XM3 4040	2287	VS-022	2307	VS-800
2218	5030/5030C	2248	VR-501L	2288	VR-544L	2308	4VX-700
2219	VR-501L	2249	VR-502	2289	VR-501	2309	4VX-700
2240	60E-400	2250	4VX-5405	2300	4VX-5414	2309	

JVC AMERICA, INC.
 1 LINDEN AVENUE
 200 SOUTH BROADWAY, NEW YORK, NY 10038

